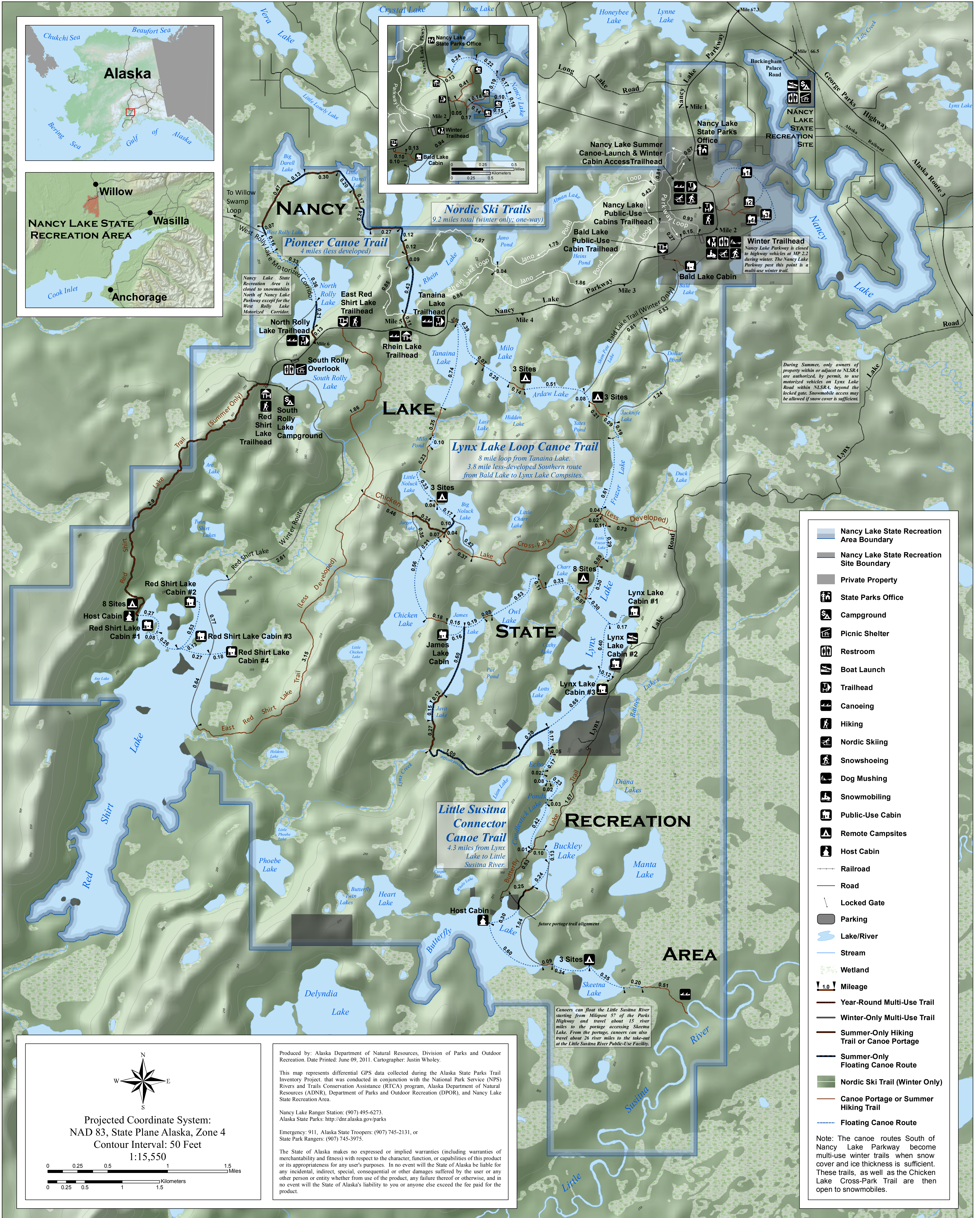
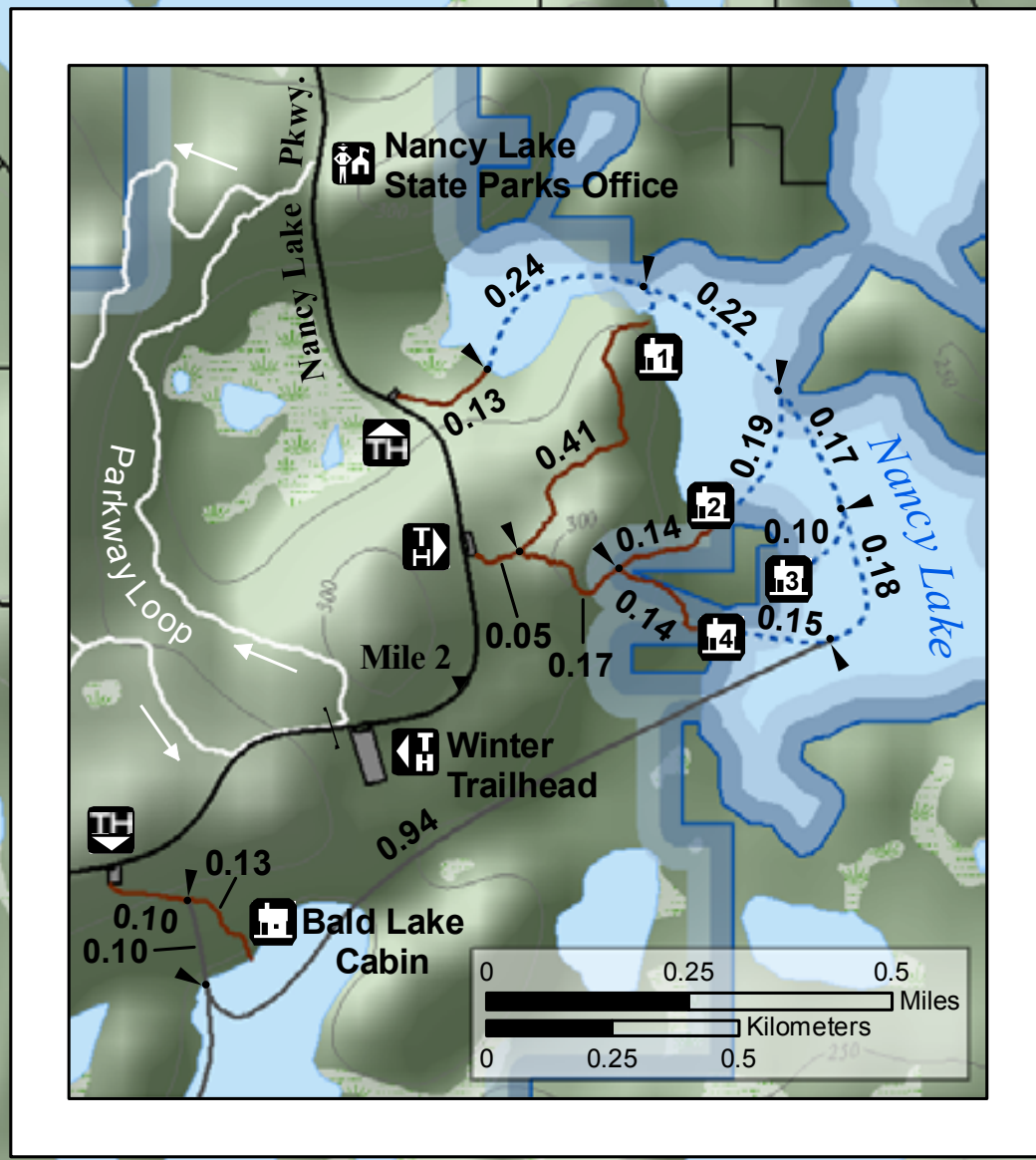
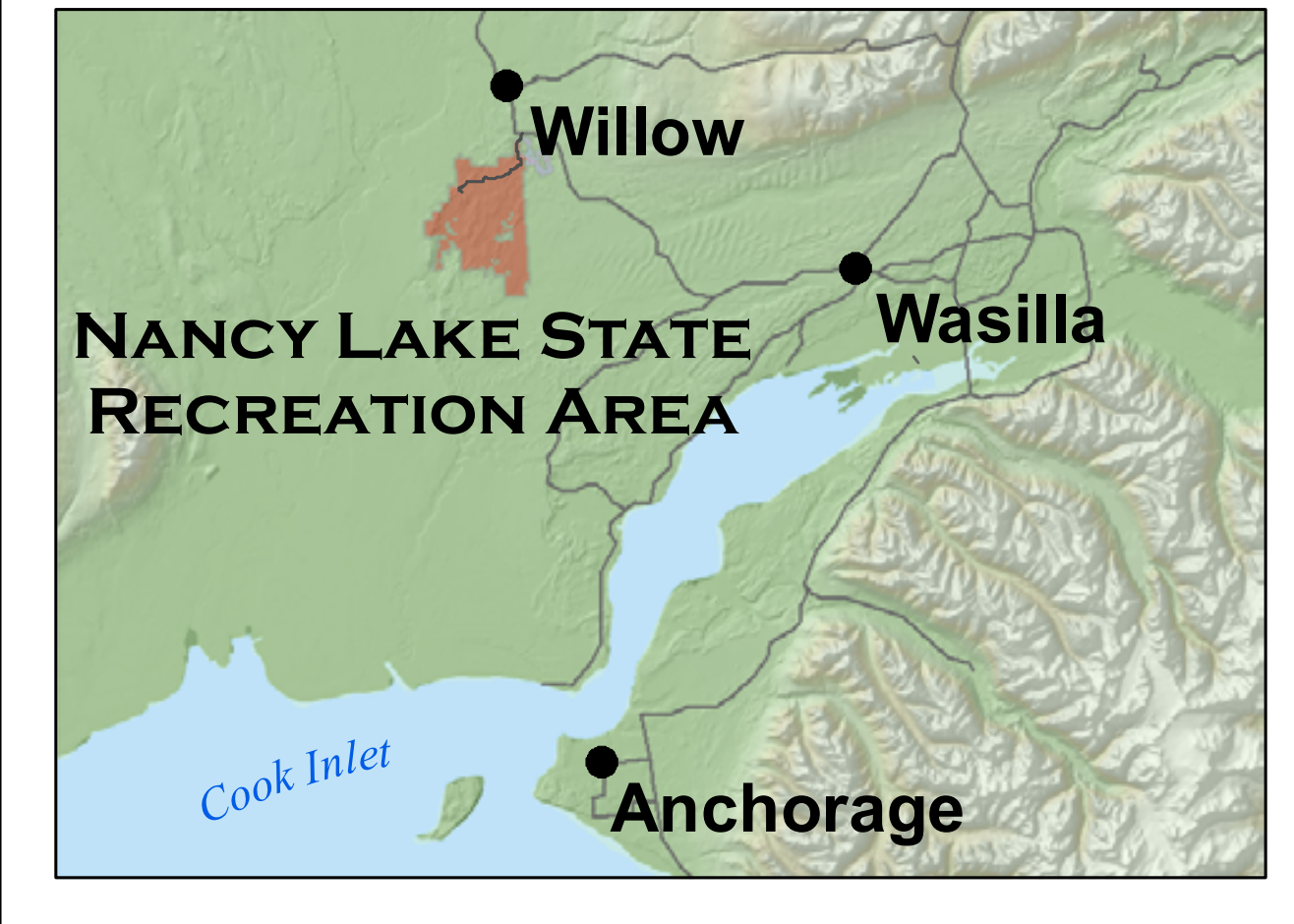




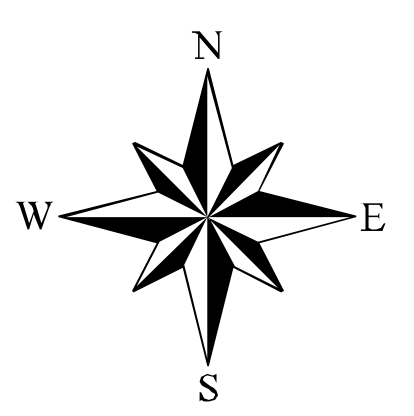
NANCY LAKE STATE RECREATION AREA



During Summer, only owners of property within or adjacent to NLSRA are authorized, by permit, to use motorized vehicles on Lynx Lake Road within NLSRA, beyond the locked gate. Snowmobile access may be allowed if snow cover is sufficient.

Canoeists can float the Little Susitna River starting from Milepost 57 of the Parks Highway and travel about 15 river miles to the portage accessing Skeetna Lake. From the portage, canoeists can also travel about 26 river miles to the take-out at the Little Susitna River Public-Use Facility.

- Nancy Lake State Recreation Area Boundary
 - Nancy Lake State Recreation Site Boundary
 - Private Property
 - State Parks Office
 - Campground
 - Picnic Shelter
 - Restroom
 - Boat Launch
 - Trailhead
 - Canoeing
 - Hiking
 - Nordic Skiing
 - Snowshoeing
 - Dog Mushing
 - Snowmobiling
 - Public-Use Cabin
 - Remote Campsites
 - Host Cabin
 - Railroad
 - Road
 - Locked Gate
 - Parking
 - Lake/River
 - Stream
 - Wetland
 - 1.0 Mileage
 - Year-Round Multi-Use Trail
 - Winter-Only Multi-Use Trail
 - Summer-Only Hiking Trail or Canoe Portage
 - Summer-Only Floating Canoe Route
 - Nordic Ski Trail (Winter Only)
 - Canoe Portage or Summer Hiking Trail
 - Floating Canoe Route
- Note: The canoe routes South of Nancy Lake Parkway become multi-use winter trails when snow cover and ice thickness is sufficient. These trails, as well as the Chicken Lake Cross-Park Trail are then open to snowmobiles.



Projected Coordinate System:
NAD 83, State Plane Alaska, Zone 4
Contour Interval: 50 Feet
1:15,550



Produced by: Alaska Department of Natural Resources, Division of Parks and Outdoor Recreation. Date Printed: June 09, 2011. Cartographer: Justin Wholey.

This map represents differential GPS data collected during the Alaska State Parks Trail Inventory Project, that was conducted in conjunction with the National Park Service (NPS) Rivers and Trails Conservation Assistance (RTCA) program, Alaska Department of Natural Resources (ADNR), Department of Parks and Outdoor Recreation (DPOR), and Nancy Lake State Recreation Area.

Nancy Lake Ranger Station: (907) 495-6273.

Alaska State Parks: <http://dnr.alaska.gov/parks>

Emergency: 911, Alaska State Troopers: (907) 745-2131, or State Park Rangers: (907) 745-3975.

The State of Alaska makes no expressed or implied warranties (including warranties of merchantability and fitness) with respect to the character, function, or capabilities of this product or its appropriateness for any user's purposes. In no event will the State of Alaska be liable for any incidental, indirect, special, consequential or other damages suffered by the user or any other person or entity whether from use of the product, any failure thereof or otherwise, and in no event will the State of Alaska's liability to you or anyone else exceed the fee paid for the product.